

## ANNUAL SURFACE LEASE INFORMATION FOR VALLEY CREST HERITAGE FARMS

### PARCEL 1 (SE 12-37-2-W5TH)

HARVEST OPERATIONS CORP. (Surface Lease dated April 6, 2005)	<b>\$ 4,700.00</b>
HARVEST OPERATIONS CORP. (Surface Lease dated July 3, 2008)	<b>\$ 2,800.00</b>
HARVEST OPERATIONS CORP. (Surface Lease dated October 30, 2008)	<b>\$ 3,200.00</b>
HARVEST OPERATIONS CORP. (Surface Lease dated October 30, 2008)	<b>\$ 3,000.00</b>

### PARCEL 2 (SW 12-37-2-W5TH)

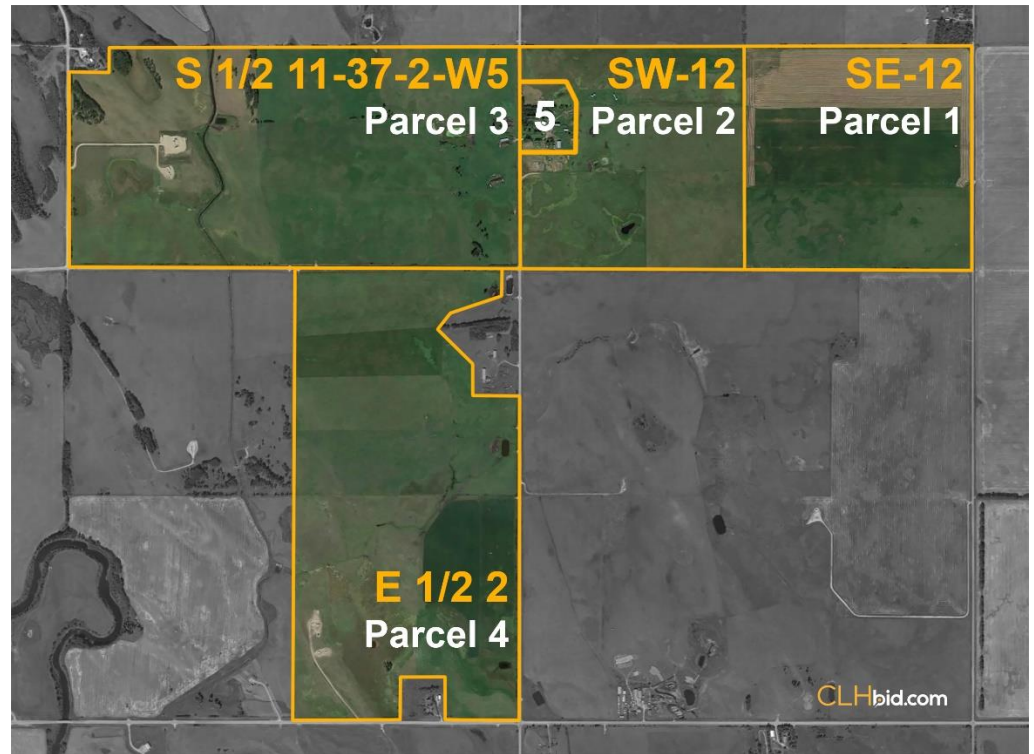
HARVEST OPERATIONS CORP. (Surface Lease dated July 19, 2007)	<b>\$ 3,000.00</b>
---	--------------------

### PARCEL 3 (SW 11-37-2-W5TH)

HARVEST OPERATIONS CORP. (Surface Lease dated October 8, 1999)	<b>\$ 4,800.00</b>
HARVEST OPERATIONS CORP. (Surface Lease dated June 11, 2004)	<b>\$ 2,700.00</b>

### PARCEL 3 (SE 11-37-2-W5TH)

HARVEST OPERATIONS CORP. (Surface Lease dated February 27, 2006)	<b>\$ 3,011.00</b>
---	--------------------



*Continued on second page...*

**PARCEL 4 (PLAN 1621866 BLOCK 1 LOT 2 in the NE 2-37-2-W5TH)**

HARVEST OPERATIONS CORP. **\$ 3,220.00**  
(Surface Lease dated March 22, 2006)

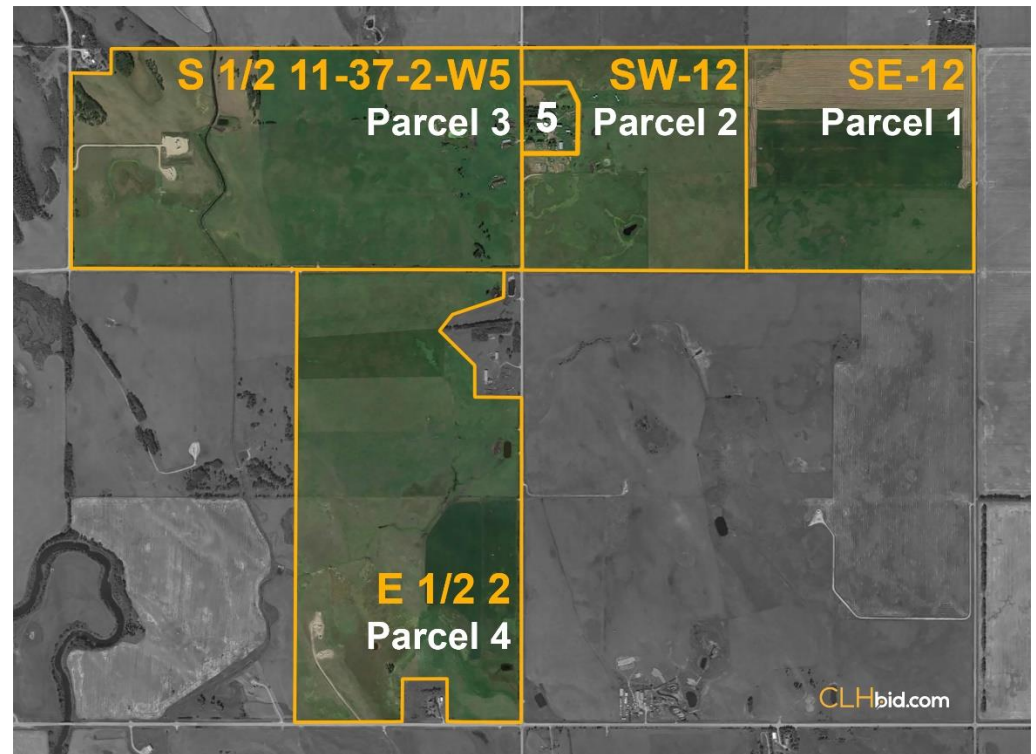
**PARCEL 4 (SE 2-37-2-W5TH)**

HARVEST OPERATIONS CORP. **\$ 4,300.00**  
(Surface Lease dated October 8, 1999)

HARVEST OPERATIONS CORP. **\$ 2,720.00**  
(Surface Lease dated March 16, 2005)

HARVEST OPERATIONS CORP. **\$ 3,000.00**  
(Surface Lease dated June 18, 2008)

**GRAND TOTAL \$ 40,451.00**



This statement is based on information provided to us. The information is believed to be correct, but its accuracy cannot be guaranteed. Errors and/or omissions discovered prior and after auction shall be adjusted directly between the parties.

E. & O.E.