

## ANNUAL SURFACE LEASE INFORMATION FOR TOMSLAKE VARIED

### PARCEL 1: PID 014-495-708 & 014-495-635

OVINTIV CANADA ULC  
(Surface Lease date: May 10, 2007) \$7,500.00

### PARCEL 2: PID 014-132-389

OVINTIV CANADA ULC  
(Surface Lease date: February 25, 2005) \$6,312.50

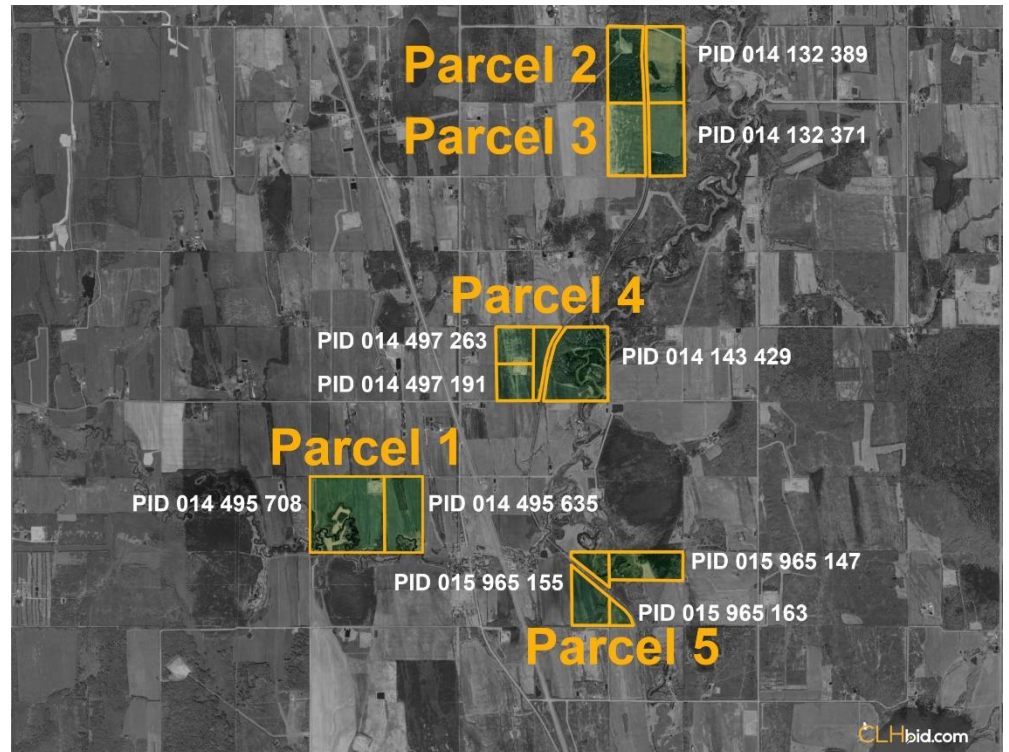
### PARCEL 4: PID 014-497-263, 014-497-191 & 014-143-429

MURPHY OIL COMPANY LTD.  
(Surface Lease date: November 20, 2007) \$9,715.00

### PARCEL 5: PID 015-965-155, 015-965-147 & 015-965-163

MURPHY OIL COMPANY LTD.  
(Surface Lease date: January 7, 2008) \$1,200.00

**GRAND TOTAL OF 4 PARCELS** **\$24,727.50**



This statement is based on information provided to us. The information is believed to be correct, but its accuracy cannot be guaranteed. Errors and/or omissions discovered prior and after auction shall be adjusted directly between the parties. Surface Lease Revenue and Structure Payments are subject to change and CLHbid in no way guarantees this revenue. E. & O.E.