

PLAN

Shannon Railway of New Knoch in

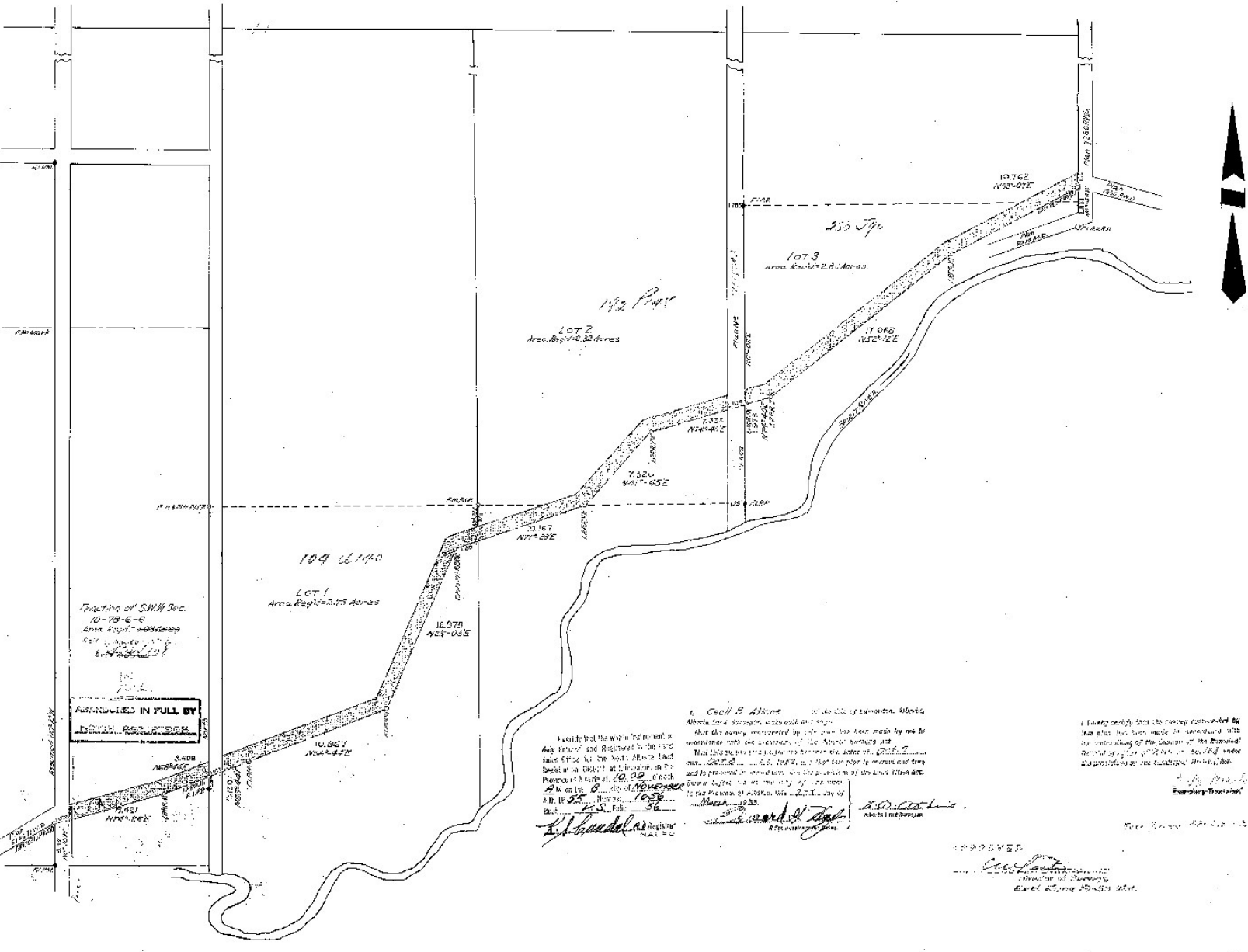
Lots 1, 2 and 3 Spirit River Settlement and in S.W. 1/4 Sec. 10 Tp. 78 Rg. 6 W6

C.B. ATKINS, A.L.S.

1952

SCALE 1 INCH = 4 CHAINS

DISTANCES BY SURVEY CALCULATION



Tracting of S.W. 1/4 Sec. 10-78-6-6 Area 40.00 Acres

ASSUMED IN FULL BY DEAN ASSURANCE

I certify that the within instrument is a true and correct copy of the original as filed in the office of the Registrar of Land Titles at Edmonton, Alberta, on this 10th day of 1952.

C.B. Atkins
 C.B. Atkins, A.L.S.
 Registrar of Land Titles

C.B. Atkins of the City of Edmonton, Alberta, Alberta Land Surveyor, do hereby certify that the survey represented by this plan has been made by me in accordance with the provisions of the Alberta Land Survey Act, R.S.A. 1943, c. 24, and that the same is a true and correct copy of the original as filed in the office of the Registrar of Land Titles at Edmonton, Alberta, on this 10th day of 1952.

C.B. Atkins
 C.B. Atkins, A.L.S.
 Registrar of Land Titles

I hereby certify that the survey represented by this plan has been made in accordance with the provisions of the Statutes of the Province of Alberta, Chapter 24, R.S.A. 1943, and that the same is a true and correct copy of the original as filed in the office of the Registrar of Land Titles at Edmonton, Alberta, on this 10th day of 1952.

C.B. Atkins
 C.B. Atkins, A.L.S.
 Registrar of Land Titles

APPROVED
[Signature]
 Registrar of Land Titles
 Edmonton, Alberta
 April 10th 1952